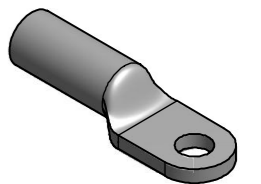
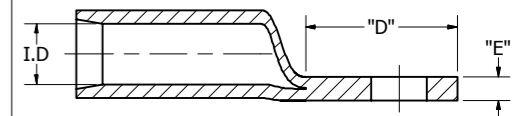
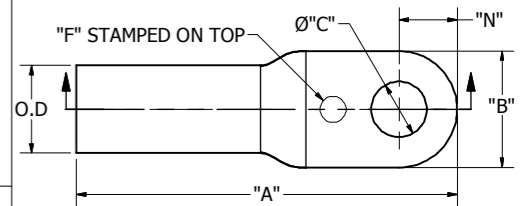


STANDARD PACKAGING			OEM BULK PACKAGING			WIRE SIZE	STUD SIZE	CONNECTOR MARKING	DIMENSIONS										BURNDY INSTALLATION TOOLING (# CRIMPS)					
BURNDY CATALOG NUMBER	BURNDY ITEM NUMBER	BOX QTY	BURNDY CATALOG NUMBER	BURNDY ITEM NUMBER	BOX QTY				"A"	O.D.	"B"	"C"	"D"	"E"	"F"	"N"	"Z MIN"	STRIP LENGTH	DIE INDEX	COLOR CODE	MECH MD7-34R MD6	HYDRAULIC PATMD6 PAT600	Y35, Y750, PAT 750	DIELESS (#CRIMPS)
YAGB6CLTC10FX	50000973	20	YAGB6CLTC10FXOEM	50001014	200	#6	10#	BLUE	1.46 [37]	0.33 [8]	0.44 [11]	0.23 [6]	0.58 [15]	0.09 [2]	6	0.22 [6]								
YAGB6CLTC14FX	50000974	20	YAGB6CLTC14FXOEM	50001015	200	#6	1/4	BLUE	1.46 [37]	0.33 [8]	0.44 [11]	0.28 [7]	0.58 [15]	0.09 [2]	6	0.22 [6]								
YAGB6CLTC516FX	50000975	20	YAGB6CLTC516FXOEM	50001016	200	#6	5/16	BLUE	1.61 [41]	0.33 [8]	0.60 [15]	0.34 [9]	0.72 [18]	0.08 [2]	6	0.30 [8]	.38 [10]	7/8"	7	BLUE	W5CVT (1) W5CRT (1)	W5CVT (1) W5CRT (1)	U5CRT (1)	
YAGB6CLTC38FX	50000976	20	YAGB6CLTC38FXOEM	50001017	200	#6	3/8	BLUE	1.61 [41]	0.33 [8]	0.60 [15]	0.40 [10]	0.72 [18]	0.08 [2]	6	0.30 [8]								
YAGB6CLTC12FX	50000977	20	YAGB6CLTC12FXOEM	50001018	200	#6	1/2	BLUE	1.73 [44]	0.33 [8]	0.74 [19]	0.52 [13]	0.86 [22]	0.07 [2]	6	0.38 [10]								
YAGB4CLTC10FX	50000978	20	YAGB4CLTC10FXOEM	30006059	200	# 4	10#	GRAY	1.36 [35]	0.38 [10]	0.55 [14]	0.21 [5]	0.52 [13]	0.09 [2]	4	0.25 [6]	.26 [7]	9/16"						
YAGB4CLTC14FX	50000979	20	YAGB4CLTC14FXOEM	30012561	200	# 4	1/4	GRAY	1.97 [50]	0.42 [11]	0.75 [19]	0.28 [7]	0.86 [22]	0.10 [3]	4	0.37 [9]							MECHANICAL MY29-11 (1) MRC840 (1)	
YAGB4CLTC516FX	50000980	20	YAGB4CLTC516FXOEM	30012563	200	# 4	5/16	GRAY	1.97 [50]	0.42 [11]	0.75 [19]	0.34 [9]	0.86 [22]	0.10 [3]	4	0.37 [9]	.44 [11]	15/16"	8	GRAY	W4CVT (1) W4CRT (1)	W4CVT (1) W4CRT (1)	U4CRT (1)	HYDRAULIC PAT81KFT (1) PAT4PC834 (1) PAT644(1)
YAGB4CLTC38FX	50000981	20	YAGB4CLTC38FXOEM	30012562	200	# 4	3/8	GRAY	1.97 [50]	0.42 [11]	0.75 [19]	0.40 [10]	0.86 [22]	0.10 [3]	4	0.37 [9]								
YAGB4CLTC12FX	50000982	20	YAGB4CLTC12FXOEM	50001019	200	# 4	1/2	GRAY	1.97 [50]	0.42 [11]	0.75 [19]	0.52 [13]	0.86 [22]	0.10 [3]	4	0.37 [9]								
YAGB2CLTC10FX	50000983	20	YAGB2CLTC10FXOEM	50001020	200	# 2	10#	GREEN	2.09 [53]	0.48 [12]	0.81 [21]	0.23 [6]	0.96 [24]	0.11 [3]	2	0.40 [10]								
YAGB2CLTC14FX	50000984	20	YAGB2CLTC14FXOEM	30008170	200	# 2	1/4	GREEN	2.09 [53]	0.48 [12]	0.81 [21]	0.28 [7]	0.96 [24]	0.11 [3]	2	0.40 [10]								
YAGB2CLTC516FX	50000985	20	YAGB2CLTC516FXOEM	30008172	200	# 2	5/16	GREEN	2.09 [53]	0.48 [12]	0.81 [21]	0.34 [9]	0.96 [24]	0.11 [3]	2	0.40 [10]	.51 [13]	15/16"	10	BROWN	W2CVT (1) W2CRT (1)	W2CVT (1) W2CRT (1)	U2CRT (1)	
YAGB2CLTC38FX	50000986	20	YAGB2CLTC38FXOEM	30008171	200	# 2	3/8	GREEN	2.09 [53]	0.48 [12]	0.81 [21]	0.40 [10]	0.96 [24]	0.11 [3]	2	0.40 [10]								
YAGB2CLTC12FX	50000987	20	YAGB2CLTC12FXOEM	30008169	200	# 2	1/2	GREEN	2.09 [53]	0.48 [12]	0.81 [21]	0.52 [13]	0.96 [24]	0.11 [3]	2	0.40 [10]								
YAGB25LTC14FX	50000988	20	YAGB25LTC14FXOEM	30008165	200	1/0	1/4	BLACK	2.40 [61]	0.57 [14]	0.87 [22]	0.28 [7]	0.95 [24]	0.12 [3]	1/0	0.43 [11]								
YAGB25LTC516FX	50000989	20	YAGB25LTC516FXOEM	30008167	200	1/0	5/16	BLACK	2.40 [61]	0.57 [14]	0.87 [22]	0.34 [9]	0.95 [24]	0.12 [3]	1/0	0.43 [11]	.48 [12]	1-3/16"	12	PINK	W25VT (2) W25RT (2)	W25VT (2) W25RT (2)	U25RT (1)	
YAGB25LTC38FX	50000990	20	YAGB25LTC38FXOEM	30008166	200	1/0	3/8	BLACK	2.40 [61]	0.57 [14]	0.87 [22]	0.40 [10]	0.95 [24]	0.12 [3]	1/0	0.43 [11]								
YAGB25LTC12FX	50000991	20	YAGB25LTC12FXOEM	50001021	200	1/0	1/2	BLACK	2.40 [61]	0.57 [14]	0.87 [22]	0.52 [13]	0.95 [24]	0.12 [3]	1/0	0.43 [11]								
YAGB26LTC14FX	50000992	20	YAGB26LTC14FXOEM	30008151	100	2/0	1/4	ORANGE	2.44 [62]	0.64 [16]	0.91 [23]	0.28 [7]	1.01 [26]	0.15 [4]	2/0	0.45 [11]								
YAGB26LTC516FX	50000993	20	YAGB26LTC516FXOEM	30008168	100	2/0	5/16	ORANGE	2.44 [62]	0.64 [16]	0.91 [23]	0.34 [9]	1.01 [26]	0.15 [4]	2/0	0.45 [11]	.57 [14]	1-3/16"	13	BLACK	W26VT (2) W26RT (2)	W26VT (2) W26RT (2)	U26RT (1)	MECHANICAL MY29-11 (1) MRC840 (2)
YAGB26LTC38FX	50000994	20	YAGB26LTC38FXOEM	30008152	100	2/0	3/8	ORANGE	2.44 [62]	0.64 [16]	0.91 [23]	0.40 [10]	1.01 [26]	0.15 [4]	2/0	0.45 [11]								
YAGB26LTC12FX	50000995	20	YAGB26LTC12FXOEM	30008150	100	2/0	1/2	ORANGE	2.44 [62]	0.64 [16]	0.91 [23]	0.52 [13]	1.01 [26]	0.15 [4]	2/0	0.45 [11]							HYDRAULIC PAT81KFT (1) PAT4PC834 (1)	
YAGB28LTC14FX	50000996	20	YAGB28LTC14FXOEM	30008154	100	4/0	1/4	YELLOW	2.56 [65]	0.78 [20]	1.10 [28]	0.28 [7]	1.07 [27]	0.15 [4]	4/0	0.55 [14]								
YAGB28LTC516FX	50000997	20	YAGB28LTC516FXOEM	30008156	100	4/0	5/16	YELLOW	2.56 [65]	0.78 [20]	1.10 [28]	0.34 [9]	1.07 [27]	0.15 [4]	4/0	0.55 [14]	.48 [12]	1-3/16"	15	PURPLE	W28VT (2) W28RT (2)	W28VT (2) W28RT (2)	U28RT (1)	
YAGB28LTC38FX	50000998	20	YAGB28LTC38FXOEM	30008155	100	4/0	3/8	YELLOW	2.56 [65]	0.78 [20]	1.10 [28]	0.40 [10]	1.07 [27]	0.15 [4]	4/0	0.55 [14]								
YAGB28LTC12FX	50000999	20	YAGB28LTC12FXOEM	30008153	100	4/0	1/2	YELLOW	2.56 [65]	0.78 [20]	1.10 [28]	0.52 [13]	1.07 [27]	0.15 [4]	4/0	0.55 [14]								



NOTES:

- MATERIAL : COPPER.
- FINISH: TIN PLATED.
- TERMINAL : HEAVY DUTY. ACCOMMODATES CLASS: B, C, G, H, I, K STRANDED COPPER CONDUCTOR.
- PACKAGE QUANTITY:
STANDARD PACKAGE - 20
OEM PACKAGE - SEE TABLE
- DIMENSIONS IN BRACKETS [] ARE IN MILLIMETERS ROUNDED OFF TO THE NEAREST MILLIMETER, UNLESS OTHERWISE SPECIFIED AND ARE FOR REFERENCE ONLY.

- ACCOMMODATES THE FOLLOWING BATTERY POST TYPES:
TYPE A - SAE
TYPE A1 - DIN
TYPE A2 - EN/JIS
TYPE A3 - JIS PENCIL POST
TYPE M - MARINE
TYPE M1 - MARINE.

REV	DATE	DESCRIPTION	ECO	BY	CH'K.
D	12/19/12	TORQUE SPEC WAS INCLUDED & TOOLING DETAILS WERE UPDATED AS PER MARK-UP	29865	VK	MA

TO ORDER BURNDY® PRODUCTS CALL

UNITED STATES
1-800-346-4175 (LONDONDERRY, NH)

CANADA:
1-800-361-6975 (QUEBEC)
1-800-387-6487 (ALL OTHER PROVINCES)

FOR PRODUCT INFO: <http://www.burndy.com>

BATTERY TERMINAL "LUG" TYPE	
ITEM NO:	SEE TABLE
CAT. NO:	YAGB--LTC--FX, YAGB--LTC--FXOEM (TABLE)
DRAWN BY:	V KAMAL 10/10/12
CHECKER:	A MONTMINY 10/05/12
DSN APRVL:	A MONTMINY 10/06/12
MFG APRVL:	--
QA APRVL:	J BRODEUR 10/06/12
MKT APRVL:	J SYLVIA 10/05/12
PROD FAM:	--
PROJECT #:	--
DOCUMENT TYPE:	SALES
REL LEVEL:	Released
DRAWING NO	50004537
REV	D
SHEET 1 OF 1	

